

# FREQUENTLY ASKED QUESTIONS

## MY STUDENT HAS OVERDUE LESSONS. WHAT CAN WE DO?



First, contact your student's teacher(s) to make a plan for catching up. Make sure your student completes the oldest or most overdue lessons first.

A complete listing of overdue lessons may be viewed on the Learning Coach homepage under "Alerts."

[Click here for a video to watch on how to complete overdue lessons.](#)

## WHAT ARE PENDING LESSONS AND HOW DO I MARK THEM COMPLETE?

Once the student marks a lesson as complete, a pending lesson will appear on the Learning Coach Home Page under alerts for you to review and confirm as complete. There are three ways you can complete this task: access a complete list of pending lessons from the Alerts section of the homepage, one at a time from your student's planner, or one at a time from the Lesson Viewer using the check mark icon.



[Click here for a video to watch on how to mark pending lessons complete.](#)

## ARE THE STUDENT AND LEARNING COACH PLANNERS DIFFERENT?

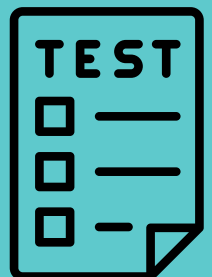


Yes. The student planner contains a complete schedule of lessons planned for a semester, along with any appointments added such as LiveLesson® session days and times. The Learning Coach Planner contains important school events and appointments, not student lessons. There are three types of planners available within Connexus® to help keep you organized: the Household Planner, Personal Planner and Student Planner.

[Click here for a tutorial on how to use the planners.](#)

## DO WILLCA STUDENTS PARTICIPATE IN STATE TESTING?

Yes. Students at Willamette Connections Academy are required by state law to participate in the mandatory testing. Additional state testing information can be found in our State Testing Information resource link below, and we will continue to update our families throughout the year on testing dates, locations and other important information as it becomes available.



[Click here for state testing Information at Willamette Connections Academy](#)

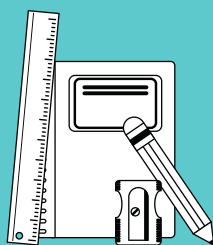
## WHY DOES IT SAY MY STUDENT CANNOT COMPLETE AN ASSESSMENT?



Before taking an assessment (portfolio, quiz, test, etc.), students need to complete each lesson in the unit by submitting the required elements electronically, such as practice pages, quick checks, portfolio items, and prior assessments. Once these are submitted, the final step is for the Learning Coach to mark the lesson as complete as described above.

## WILL I NEED TO PURCHASE SUPPLIES FOR MY STUDENT?

Willamette Connections Academy will provide you with most of the materials that your student will need for their lessons. However, there will be a small list of things that you will need to acquire throughout the semester and/or year to help your student complete various assignments. The Materials List can be found in the purple "Tools" box when you click on your student's name from the Learning Coach homepage. This list shows you what we provide and what you may need to gather. Most of the items that will be asked of you are things you likely have around your house or can get at a local store.



## WHERE CAN I FIND ADDITIONAL SUPPORT AS A LEARNING COACH?



WillCA teacher(s) and staff are your first line of support if you need help. Never hesitate to reach out. However, we know that being a Learning Coach can be overwhelming! Luckily, there is a database of resources available for Learning Coaches, which is linked below. You can also browse Learning Coach Central from the "Links" section on your Learning Coach homepage.

[Click here for access to Learning Coach Central](#)

We appreciate your partnership as Learning Coaches and hope that you and your student have an amazing school year this year! We are here to help and support in any way we can!

